



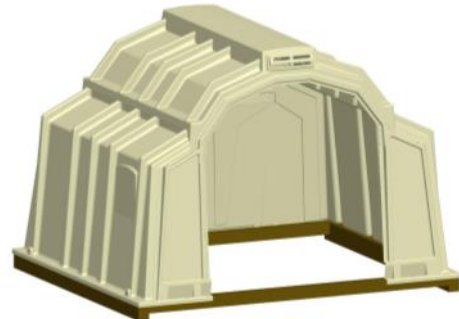
MultiMax Assembly Instructions



Thank you for buying a Calf-Tel MultiMax Hutch. We recommend that you:

- First assemble the timber base
- Then assemble the MultiMax hutch
- Finally attach the hutch to the base.

If possible, we suggest you leave the panels for a day or two after delivery to regain their natural shape before assembling them.



1. Equipment

You will need:

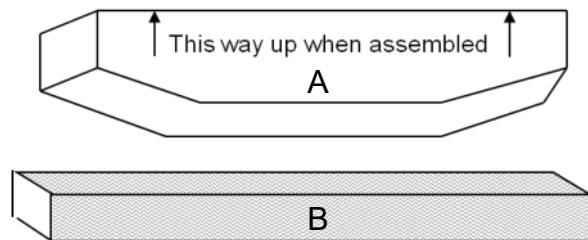
- Drill with 5.5 mm and 8mm bit
- 5/16 socket and spanner, 11mm and 17mm sockets
- Cross head screwdriver
- **A helper**

(if using power tools do not over-tension)

2. Assemble the timber base

a) To assemble the base you will need:

- The bag of timber base fixings
- Two pieces of side timber (A)
- Two pieces of front / back timber (B)



b) Lay the timber components out on a flat area with skids on the side pieces uppermost as shown in the diagram below.

c) Mark out and pre-drill one 8mm hole per corner as indicated by the arrows.

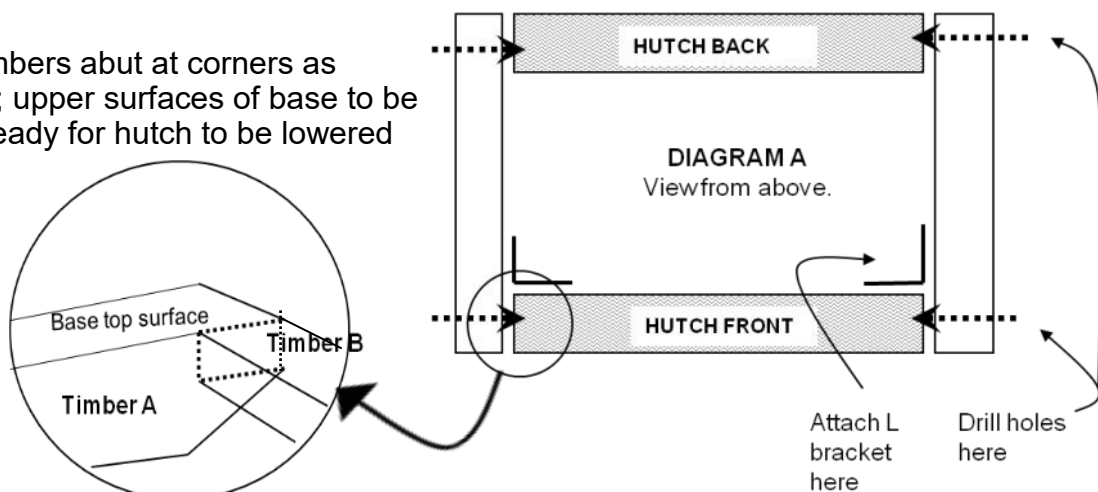
d) Slide one washer onto each bolt & insert one bolt per corner into pre-drilled holes.

e) Position L brackets against front & sides as indicated in the diagram.

f) Attach L brackets to timber with screws provided.

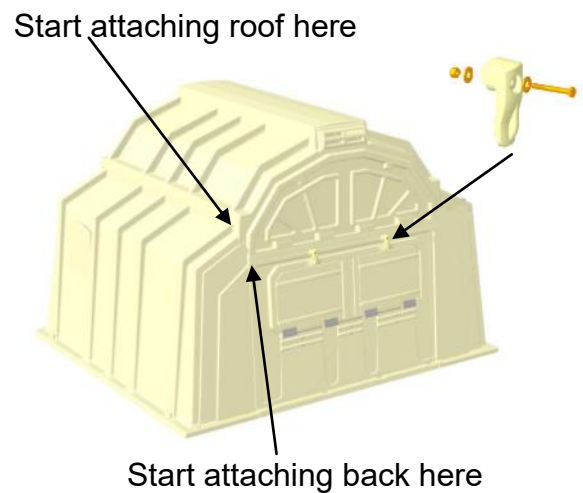
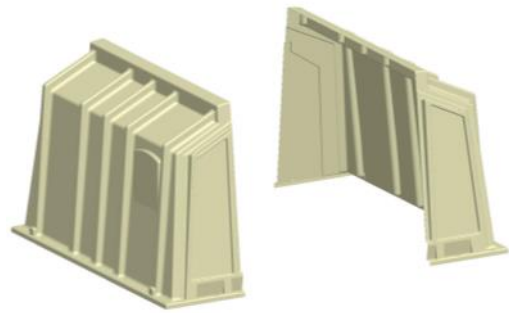
g) Lift & flip assembled base such that skids are underneath and adjacent to the ground.

The timbers abut at corners as shown; upper surfaces of base to be flush ready for hutch to be lowered on.



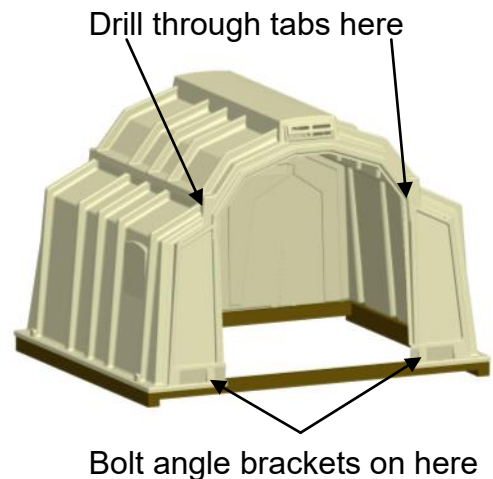
3. Assemble the MultiMax Hutch

- a) You will need:
- Left and right side panels, roof and back
 - Bag of hutch fixing components
- b) Place the left and right sides of the MultiMax on the ground standing upright approx. 5 feet (1.5m) apart as shown.
- c) **Attach the back of the MultiMax to the sides.** Bolt the back onto the outside of the sides using the small bolts and back up washers starting at the top. Insert the bolt with a washer from the inside and attach a washer and nut from the outside.
- d) **Attach the roof.** Put the roof over the back and sides. The sides should be adjusted so the ribs on the roof line up with the ribs on the sides. Bolt the roof to the sides starting at the back. Occasionally the pre-drilled holes do not line up and will need to be re-drilled.
- e) **Attach the two rear bedding door clips** to the back panel.



4. Attach the Hutch to the Base

- a) You will need the bag of hutch to base components.
- b) Put the hutch on the base with the front opening at the front of the base nearest the L brackets.
- c) Fasten the hutch to the base around the edge using washers and screws starting at the back corner and going across the back first.
- d) Fasten the two angle brackets near the entrance as shown to secure the hutch to the base.
- e) Drill through the two tabs in the roof as indicated and bolt the roof to the sides at the front.



Intershape Ltd

Michaelmas House, Royal Oak Way North, Daventry, NN11 8PQ

Tel: 01327 300 395

Email: sales@intershape.com Web: www.intershape.com